

Merchant API for Microsoft .NET

Implementation Guide to the Microsoft .NET Examples for IIS

.NET, 2000, 2003

Version 1.1

| Author | file | Letzte Änderung | Seite |
|-----------------|-----------------------|-----------------|---------|
| Jürgen Filseker | API_Client_dotNET.doc | 30.05.2007 | 1 von 9 |

Index

| | | |
|----------|---|----------|
| 1 | REQUIREMENTS FOR USING THE EXAMPLES | 3 |
| 2 | INSTALLING ASP.NET ON WINDOWS 2000 SERVER AND XP / IIS 5:..... | 3 |
| 3 | INSTALLING ASP.NET ON WINDOWS 2003 / IIS 6:..... | 3 |
| 4 | MANUALLY INSTALLING THE SAMPLES..... | 3 |
| 4.1 | CREATING AN APPLICATION CONTEXT..... | 4 |
| 5 | CONFIGURING THE SAMPLES..... | 6 |
| 5.1 | FILE COPYING..... | 6 |
| 5.2 | MERCHANT PARAMETER SETTINGS..... | 6 |
| 5.3 | CERTIFICATE SETTINGS..... | 7 |
| 5.4 | URL SETTINGS | 7 |
| 5.5 | CHANGING THE PATH TO THE MERCHANT.PROPERTIES | 8 |
| 6 | USING THE SAMPLES | 9 |
| 7 | TROUBLESHOOTING | 9 |

| Author | file | Letzte Änderung | Seite |
|-----------------|-----------------------|-----------------|---------|
| Jürgen Filseker | API_Client_dotNET.doc | 30.05.2007 | 2 von 9 |

1 Requirements for using the examples

- web server supporting ASP.Net (e.g. IIS 5.0 or better)
- .NET Framework 1.1 or better
- for the J# example: J# Runtime 1.1 or better
- Internet Connection (the Merchant Api has to be able to communicate with the paysafecard server via HTTPS (port 443))
- **The certificates don't have to be installed into the windows certificate storage in fact on a production server you should NOT install them into the certificate storage for security reasons. The certificates just have to be stored on a secure folder outside of public access.**

2 Installing ASP.Net on Windows 2000 Server and XP / IIS 5:

IIS can be installed with the Add/Remove Program tool found in the control panel.

If you install the Internet Information Server first and afterwards install the .Net Framework, ASP.Net will be available automatically.

If you first installed the .Net Framework and then the IIS you will have to register ASP.Net with IIS. You can either remove and reinstall the .Net Framework or go to %WINDIR%\Microsoft.NET\Framework\v{x}. {y} . {z} (x,y and z stand for the version of the .Net Framework) and run the aspnet_regiis.exe tool with the -i parameter.

3 Installing ASP.Net on Windows 2003 / IIS 6:

Microsoft Tutorial on how to install IIS 6.0 and ASP.Net on Windows 2003

<http://www.asp.net/faq/AspNetAndIIS6.aspx>

4 Manually installing the samples

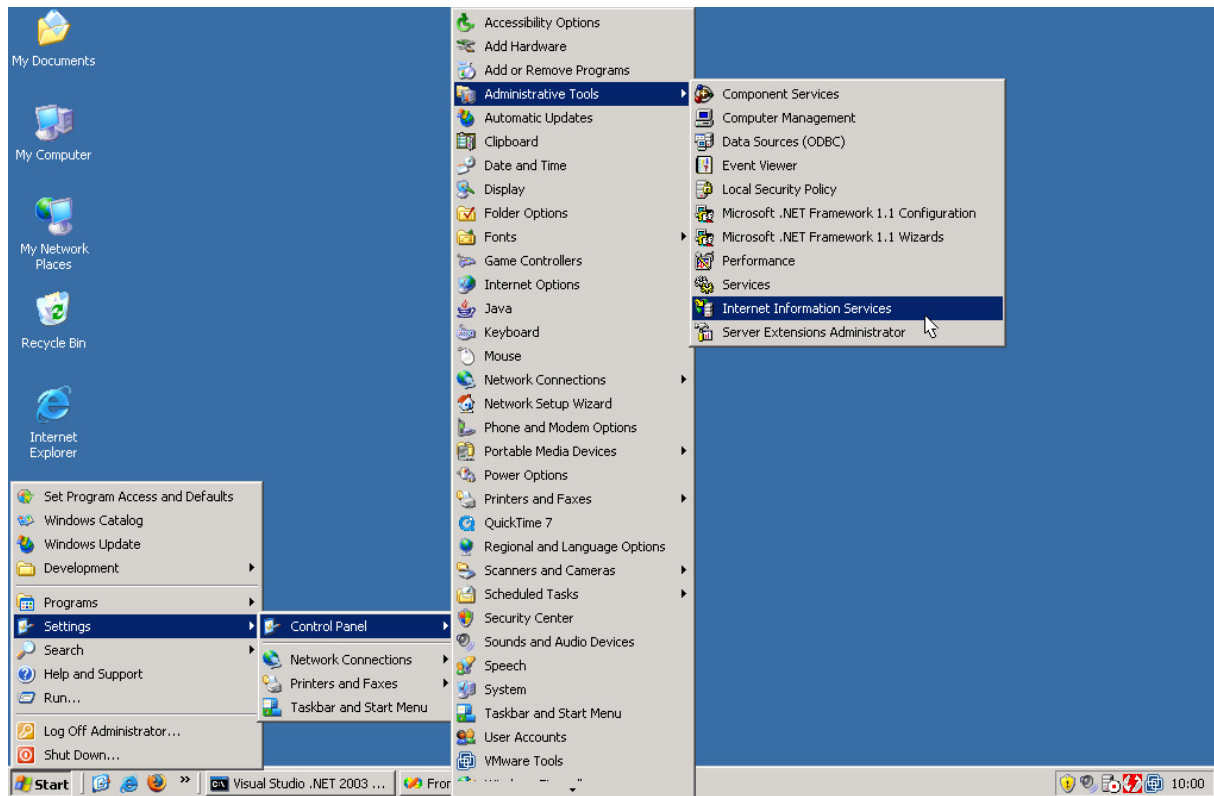
Copy the sample implementation of the programming language you wish to use to your webroot directory which is by default:

C:\inetpub\wwwroot

| Author | file | Letzte Änderung | Seite |
|-----------------|------------------------|-----------------|---------|
| Jürgen Filseker | API_Client_ dotNET.doc | 30.05.2007 | 3 von 9 |

4.1 Creating an application context

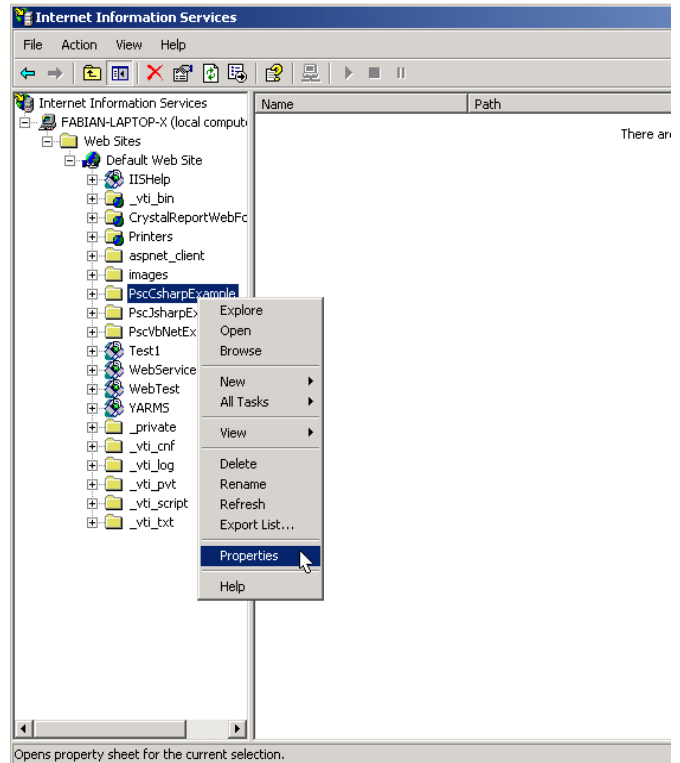
First open the Internet Information Services Manager



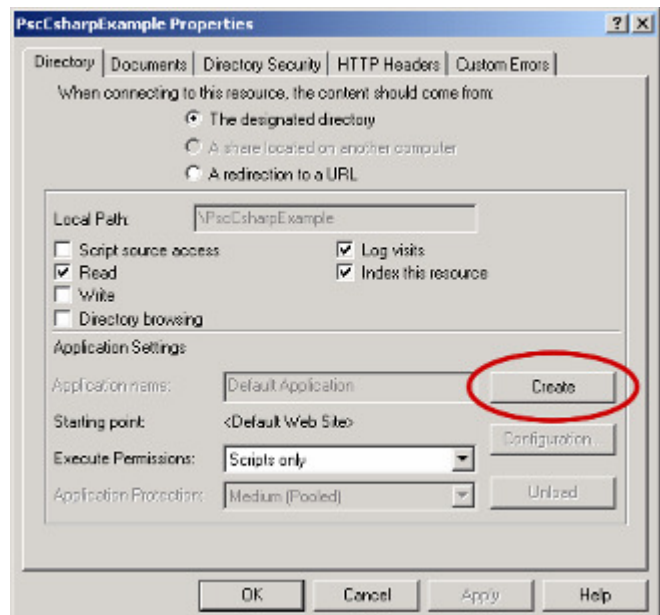
| Author | file | Letzte Änderung | Seite |
|-----------------|-----------------------|-----------------|---------|
| Jürgen Filseker | API_Client_dotNET.doc | 30.05.2007 | 4 von 9 |

Then create an application context for the samples:

Browse to the folder which contains the examples, for example if you copied them as described above, you will find them under “Default Web Site”. In the tree you should see one of these folders: PscCsharpExample, PscJsharpExample, PscVbNetExample - right click on it and click properties.



A dialog window should open, now click on the create button on the right side in the middle of the dialog and then click ok.



You now have created an application context for your example.

| Author | file | Letzte Änderung | Seite |
|-----------------|-----------------------|-----------------|---------|
| Jürgen Filseker | API_Client_dotNET.doc | 30.05.2007 | 5 von 9 |

5 Configuring the samples

5.1 File copying

The configuration file and your certificates have to be stored outside of public access! This is very important as the configuration file contains the key phrase for the private certificate.

Therefore create a folder outside of public access and copy the merchant.properties and the paysafecard-CA_dotNet.p7b to this folder. You can find these files in examples\example configuration.

Next copy the key (it is named “CMS_<YOUR MID>_001_<name>.p12” for the test system or “CPS_<YOUR MID>_001_<name>.p12” for connections to the productive system you received from paysafecard into the same folder. In our example the folder is called “c:/psc”.

5.2 Merchant parameter settings

Go to this folder and open the merchant.properties file with a text editor (for example notepad).

Change the following settings to match those you got from paysafecard:

Your merchant.properties stored in your path outside public access

```
# Merchant parameters
merchantId=<YOUR MERCHANT ID>
currency=EUR
businessType=0
reportingCriteria=
```

| Author | file | Letzte Änderung | Seite |
|-----------------|-----------------------|-----------------|---------|
| Jürgen Filseker | API_Client_dotNET.doc | 30.05.2007 | 6 von 9 |

5.3 Certificate settings

Next locate the following section in your merchant.properties file and change the settings for keyringfile and cakeyringfile to their absolute path, for example if your folder outside of public access is c:\psc this path should look like:
c:\psc\yourcertificatename.p12

The data for the keyringPW (password of the keyring file) can be found in the file "testdata.txt".

Your merchant.properties stored in your path outside public access

```
keyringfile=c:\psc\XXX_<YOUR MERCHANT ID>_YYY_ZZZZZZZ.p12  
keyringpw=<YOUR PASSWORD>  
  
cakeyringfile=c:\psc\paysafecard-CA_dotNet.p7b
```

5.4 URL settings

Now you have to locate the following settings and change them so that they point to the public location of your examples.

Your merchant.properties stored in your path outside public access

```
okUrl=http://localhost/PscJSharpExample/ok.aspx?mtid=  
notOkUrl=http://localhost/PscJSharpExample/not_ok.aspx
```

If your website is www.example.com and you have copied the files from one of the example folders into the folder c:\inetpub\wwwroot these URLs should look like:

```
okUrl=http://www.example.com/ok.aspx?mtid=  
notOkUrl=http://www.example.com/not_ok.aspx
```

5.5 Changing the path to the merchant.properties

Browse to the example, e.g. `c:\inetpub\wwwroot\PscCsharpExample`

Now open the file `Web.config` with a text editor (e.g. notepad).

Locate the following section:

Web.config in the folder of the example

```
<?xml version="1.0" encoding="utf-8" ?>
<configuration>

  <appSettings>
    <!-- path to the merchant properties -->
    <add key="merchant.properties" value="c:\psc\merchant.properties" />
  </appSettings>

</system.web>
```

Edit this part:

```
<add key="merchant.properties" value="c:\psc\merchant.properties" />
```

Only change the `value=` part, not the key!

| Author | file | Letzte Änderung | Seite |
|-----------------|-----------------------|-----------------|---------|
| Jürgen Filseker | API_Client_dotNET.doc | 30.05.2007 | 8 von 9 |

6 Using the samples

Each sample consists of 3 pages:

order.aspx

Creates the disposition and forwards the customer to the payment panel on the paysafecard server upon click on the form button.

ok.aspx

The customer will be forwarded to this page from the paysafecard server after correctly having entered the pin and having clicked on the OK-button on the second page on the panel (upon which the panel will be closed). This page will check the current state of the disposition and execute the debit.

not_ok.aspx

The customer will be forwarded to this page if anything has gone wrong, or if the customer cancelled.

7 Troubleshooting

Problem: The example displays the error: can not connect to server, but it should be able to connect to the server.

Solution: Please verify that no firewall interferes with the communication. Another possibility is that you have got a private certificate which also contains the CA root certificate (the .Net MerchantApi cannot read these files).

You have to import and export the file with your browser.

To do this, open the Internet Explorer click on Tools | Internet Options then click on the tab content and there on the Certificates button. Now click on the button that says "import". Please check that you select the option that makes the certificate exportable.

To export the certificate, find the certificate under "personal", click on it to mark it and then click on "export".

Export the certificate, including the private key, as a PKCS #12 file, having activated the checkbox in the middle (increased security, IE 5.0, NT4 or SP4 or higher required)

Then upload this file to the server, replacing the current .p12 file.

| Author | file | Letzte Änderung | Seite |
|-----------------|-----------------------|-----------------|---------|
| Jürgen Filseker | API_Client_dotNET.doc | 30.05.2007 | 9 von 9 |